

State of Wyoming Corner Record

(In compliance with the *CORNER PERPETUATION AND FILING ACT*, Wyoming Statutes, 1997, Section 33-29-140, et. seq., and the Rules and Regulations of the Board of Registration for Professional Engineers and Professional Land Surveyors)

Reverse side of this form may be used if more space is needed.

Record of original survey and citation of source of historical information (if corner is lost or obliterated). Description of corner monumentation evidence found and/or monument and accessories established to perpetuate the location of this corner. Sketch of relative location of monument, accessories, and reference points with course and distance to adjacent corner(s) (if determined in this survey). Method and rationale for reestablishment of lost or obliterated corner.

G.L.O. Record: U.S. Deputy Surveyor, Edward D. Bright, September, 1868; 40.00 Chains Set boulder 13 x 9 x 8 for 1/4 sec. cor.

Found: Nothing but a couple of loose unmarked stones in the vicinity of the corner position.

Set: At the proportionate point, a 2 1/2" x 30" aluminum pipe, 26" in the ground with a marked 3 1/4" aluminum cap as noted below. Set a 1" x 1" x 2" orange flourescent magnetic reference module in the bottom of the monument hole. At the request of the landowner I did not set a steel post as a reference and witness.

See back of this sheet for section subdivision detail.

Aluminum Cap Markings
T12N R67W
¼
S4 | S3
1999
P.L.S. 2927

LARAMIE COUNTY CLERK
CHEYENNE, WY.

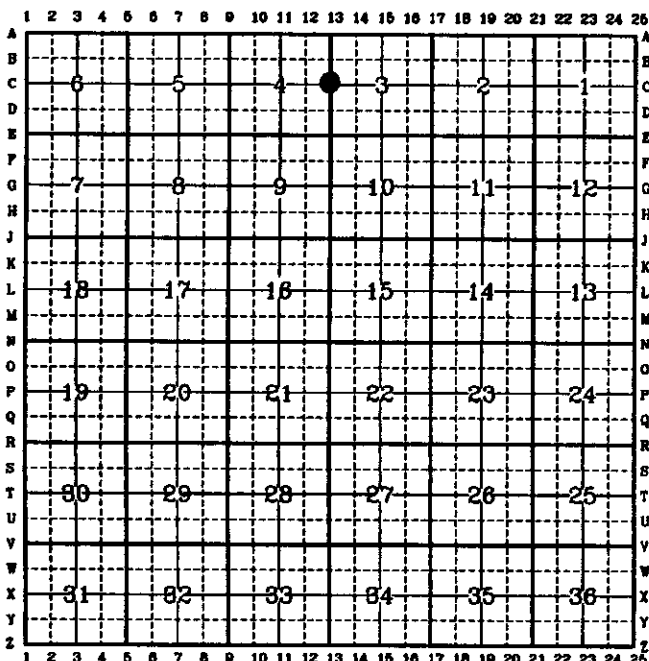
1999 JUN 21 AM 9:06

254551

Date of Field Work: April 26, 1999

Office Reference: A.V.I. Job No. 2121

CROSS INDEX DIAGRAM



Firm/Agency, Address
Paul A. Reid, P.L.S.
A.V.I., p.c.
2035 Westland Road
Cheyenne, WY 82001

Telephone Number:
(307) 637-6017

This corner record was prepared by me or under my direction and supervision.

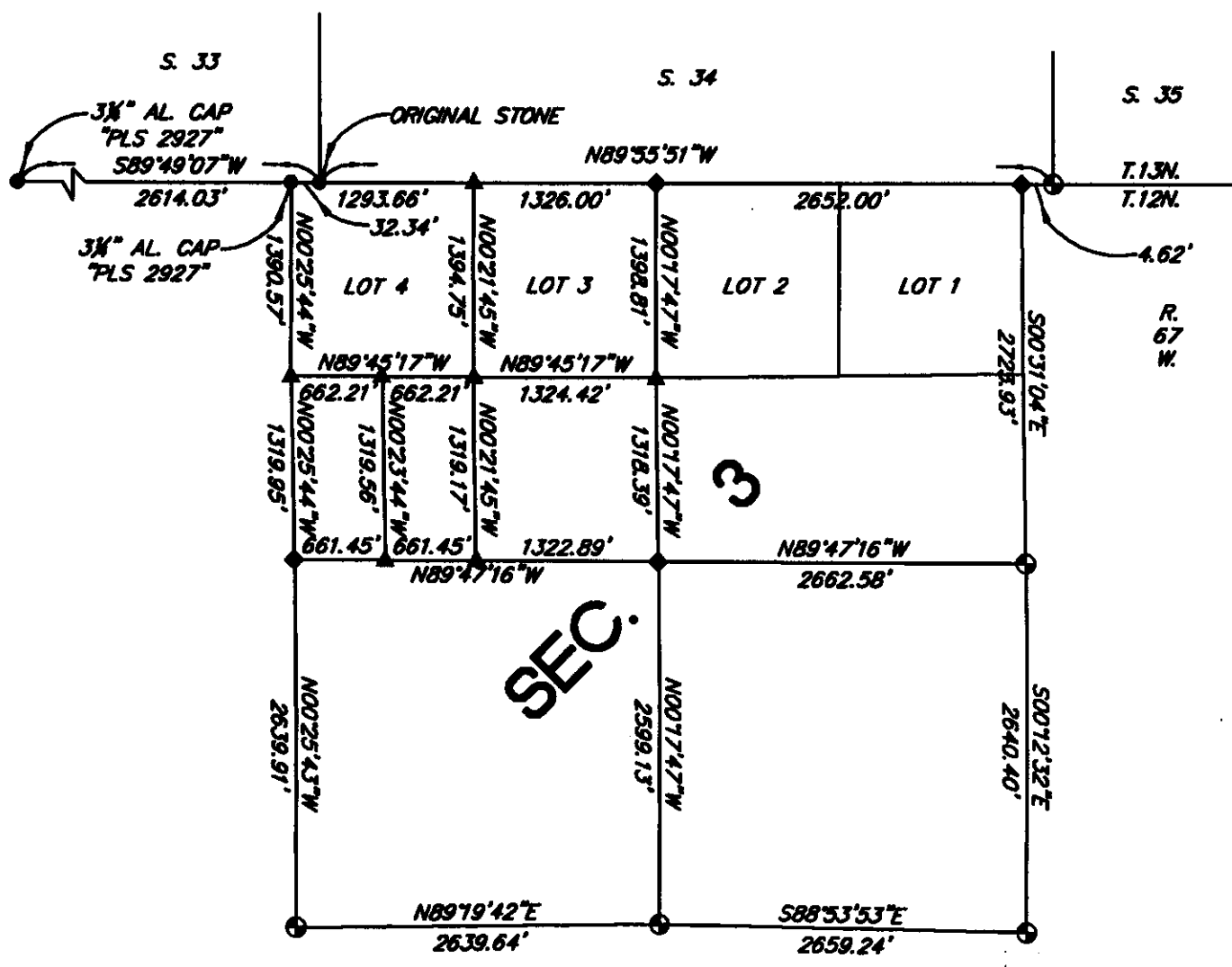
SEAL & SIGNATURE



Corner Name: W 1/4
SBRPEPLS/PLSW: March 1994

Section: 3

T.12N., R.67W.; 6th P.M. Cross-Index No.: C-13



LEGEND

- FOUND MONUMENT AS NOTED
 - ◆ SET 3 1/4" ALUMINUM CAP MARKED "PLS 2927"
 - ▲ SET 2 1/2" ALUMINUM CAP MARKED "PLS 2927"
 - ⊙ FOUND ORIGINAL STONE, RESET 3 1/4" AL. CAP MARKED "PLS 2927"
- BASIS OF BEARINGS: NAD 83 ($\Delta \alpha = 11'06''$ APPROX.)